

Print Device-Dependent PostScript® Files

USING ADOBE INDESIGN CS2 / AdobePDF 7.0 PPD

STEP 1

EDIT MENU/COLOR SETTINGS

- Settings: Emulate Adobe InDesign 2.0 Off

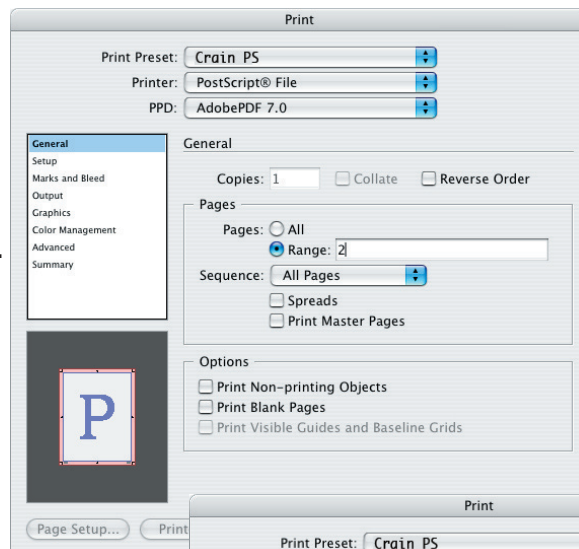
STEP 2

PRINT/GENERAL

- Printer: PostScript® File
- PPD: AdobePDF 7.0

Pages: Print single-page files. Enter range here.

Options: all off



STEP 3

PRINT/SETUP

Paper Size

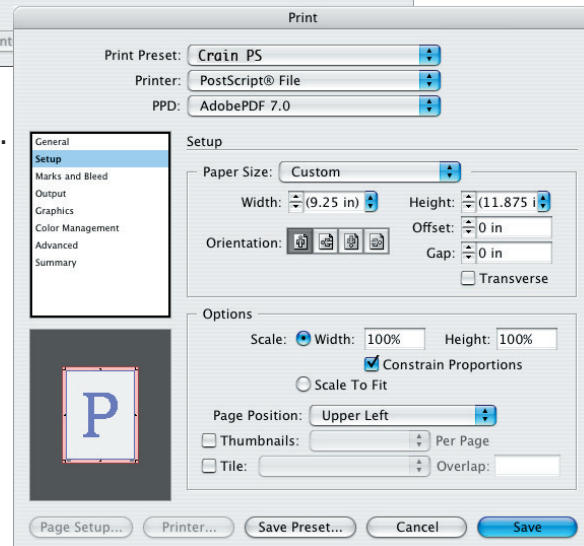
- Paper Size: Custom
- Width & Height:
 - Before** a bleed of .5" is entered (Step 4), these dimensions will reflect your page/trim size.
 - After** a bleed of .5" is entered (Step 4), these dimensions will be 1" wider and higher than your page/trim size to compensate for the inclusion of marks & bleeds.
 - For example**, if your initial page and final trim size is 8.25" x 10.875", you will ultimately see 9.25" x 11.875" in these fields.

- Offset: 0

- Gap: 0

Options

- Scale: 100%
- Page Position: Upper Left

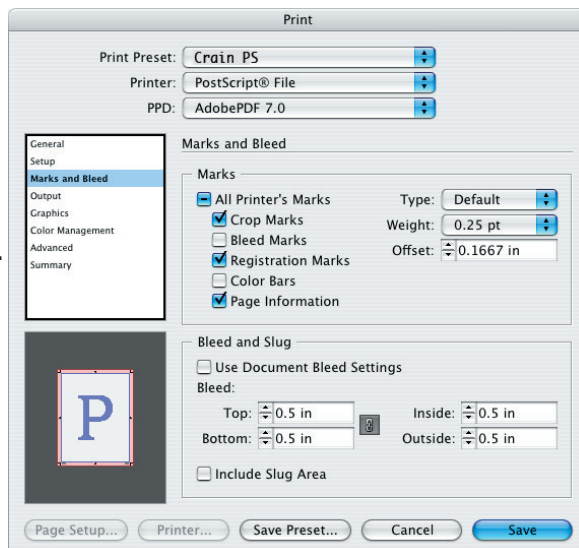


STEP 4

PRINT/MARKS & BLEEDS

Marks

- Printer's Marks:
 - Crop & Registration Marks, Page Information
- Weight: .25 pt
- Offset: .1667" (12 pt)
- Bleed:** All Sides: .5" (3p)
- Include Slug Area: off



Print Device-Dependent PostScript® Files

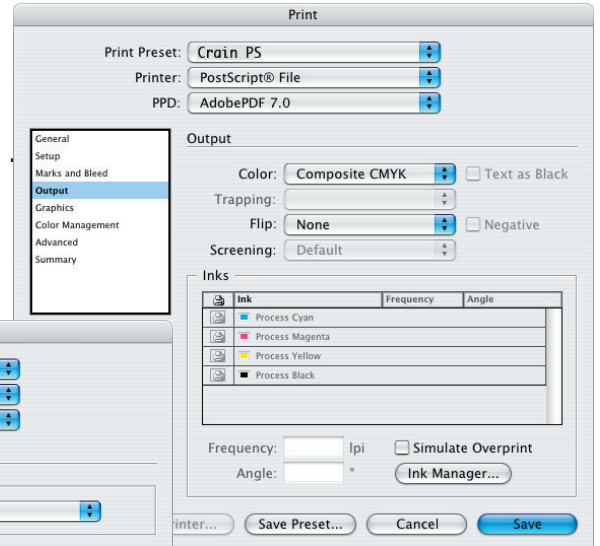
USING ADOBE INDESIGN CS2 / AdobePDF 7.0 PPD (continued)

STEP 5

PRINT/OUTPUT

Output

- Color: Composite CMYK



STEP 6

PRINT/GRAPHICS

Images

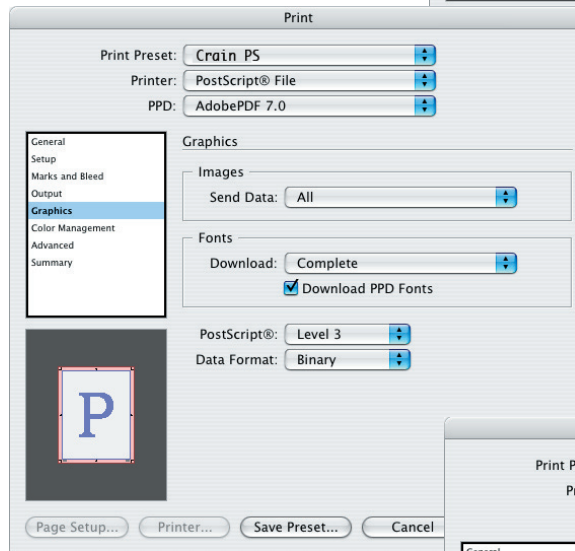
- Send Data: All

Fonts

- Download: Complete
- Download PPD Fonts

PostScript®: Level 3

Data Format: Binary



STEP 7

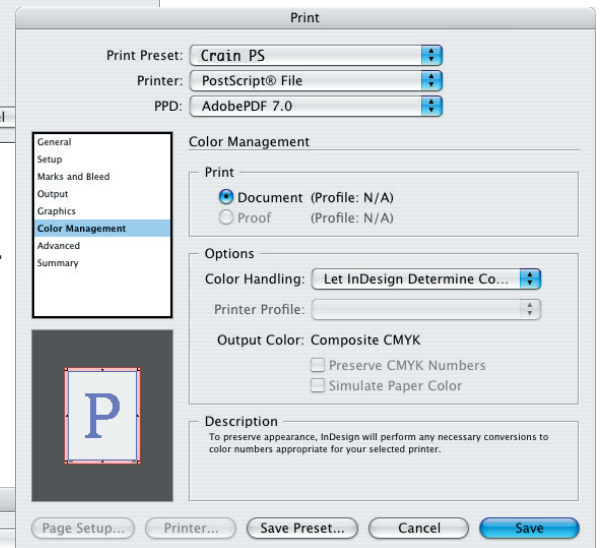
PRINT/COLOR MANAGEMENT

Print

- Document (Profile: N/A)

Options

- Color Handling: Let InDesign Determine Colors



STEP 8

PRINT/ADVANCED

OPI

- OPI Image Replacement: Off
- Omit for OPI: All Off

Transparency Flattener

- Style: High Resolution
- Ignore Spread Overrides: Off

